



**Adjustable  
Beam Fresnel!**

# VIDNEL Series VN050

## SYSTEM

Powerful 50 watt, high color rendering LED Fresnel fixture. It provides the single shadow and focusing characteristics essential to Fresnel fixtures while using a fraction of the power of tungsten units. The fixture generates a strong directional beam of adjustable light with even coverage of 3200K color (5600K optional). It also delivers flicker-free dimming without color shift and amazing color rendering at 96+ CRI. A manual slide bar at the side of the fixture adjusts the beam and locks in place. Heat dissipation is designed with a unique passive thermal cooling system to assure maximum LED light output without internal fans. Control at the back allows easy programming for DMX control and dimming. Fixture shuts off power to the integral driver when dimmed to ZERO in DMX mode so no external relay or power cut off is required. Additional control achieved with 4" gel frame and barn door accessory options.

cCSAus for USA/Canada and CE Listing in process

## SPECIFICATION

**Housing:** Constructed of .063 formed aluminum then coated with black and silver textured TGIC polyester powder coat finish.

**LED:** (1) 50 watt LED chip provides a concentrated ultra bright beam with even coverage of 3200K light (5600K optional). 96+ CRI.

**Electrical:** Unit input is 120 thru 230 volts 50/60 Hz. Draws 50 watts with on-board power supply and integrated dimmer. Silent operation. Power to unit with powerCON locking connectors and on/off switch. Control for DMX and dimming at the back of fixture.

**Mounting:** Provided with .187 welded aluminum yoke. Unit may rotate vertically through the yoke and horizontally through a pipe clamp for ease of focus, and may be locked into place.

### Fixture Includes:

- (1) LED Chip
- (1) 16' powerCON cord with NEMA5-15 (3) prong plug
- (1) C-Clamp or 5/8" Stand Adapter (Specify One)

## LED OPTICS

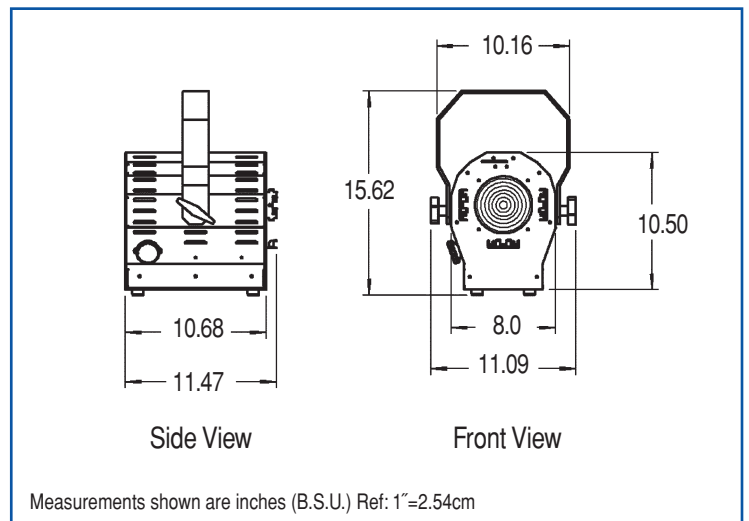
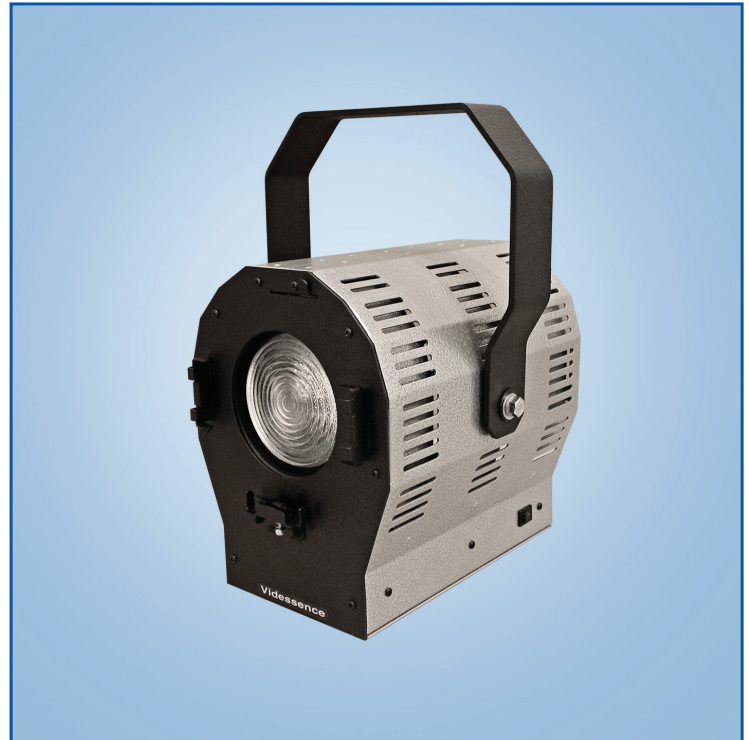
(1) 50 watt Chip at 3200K (5600K optional)

50,000 Hours Life CRI: 96+

## OPTIONS *(Must Specify Each)*

Mounting 2" O.D.C-Clamp  
5/8" Stand Adapter

LEDs 3200K (Standard)  
5600K



### MODEL #

VN050-32K-OB/DMX	On Board and DMX	120v-230v
VN050-56K-OB/DMX	On Board and DMX	120v-230v

### WEIGHT

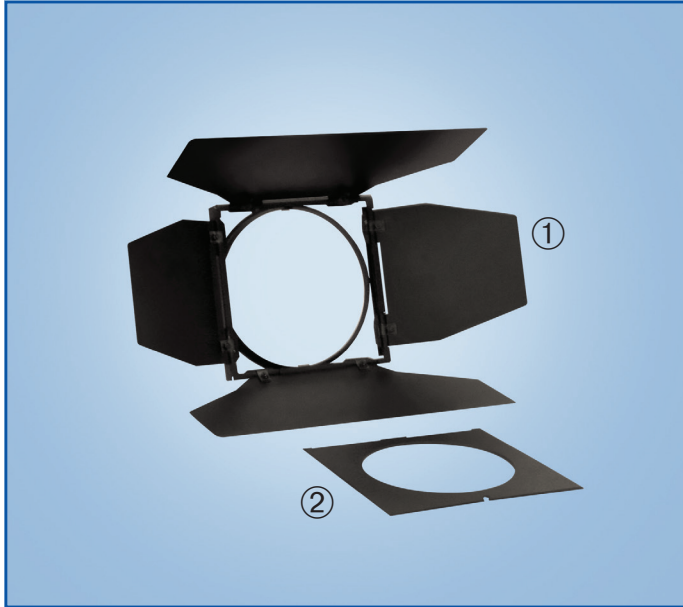
Lbs	Kg
Complete	12.0    5.4

### DIMENSIONS

Inches	Cm
Length	11.5    29.1
Height	15.6    39.7
Width	10.2    25.8

## ACCESSORIES

(See detailed description and function in Accessories Section)



### **PART #**

- ① BD-VN050 Barn Door
- ② GF-VN050 Gel Frame

## PHOTOMETRICS

2-14		DISTANCE		
MODEL VN050-32K		9ft./2.7m	12ft/3.66m	15ft/4.58m
NO ACCESSORIES	FC	207	118	77
SPOT FOCUS	Lux	2228	1270	829
	Visible Beam Spread	24" Dia.	36" Dia.	48" Dia.
NO ACCESSORIES	FC	47	31	22
FLOOD FOCUS	Lux	506	334	237

\* Light level readings were measured in foot-candles (fc) and converted to Lux using the conversion factor of 1 fc = 10.765 Lux. Values shown are light levels on centerline. Reference: Meter used – Minolta T-1 Illuminance meter. LEDs 3200K. Ambient temperature in test studio 75F ± 3F. Distance measurements converted to feet using 1ft = .305 m. Original photometric data on file at the factory.